

In case of KyotoTERRSA, it takes 10 minutes to get to the conference place from JR Kyoto station.

# Kyoto TERRSA Access Guide

Address Kyoto TERRSA Shinmachi Kujo Minami-ku, Kyoto, Japan (Kyoto Citizen's Amenity Plaza)

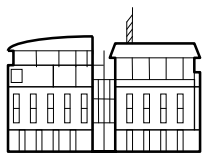
Telephone number 81+75-692-3400 Fax number 81+75-692-3402

## Access & Location

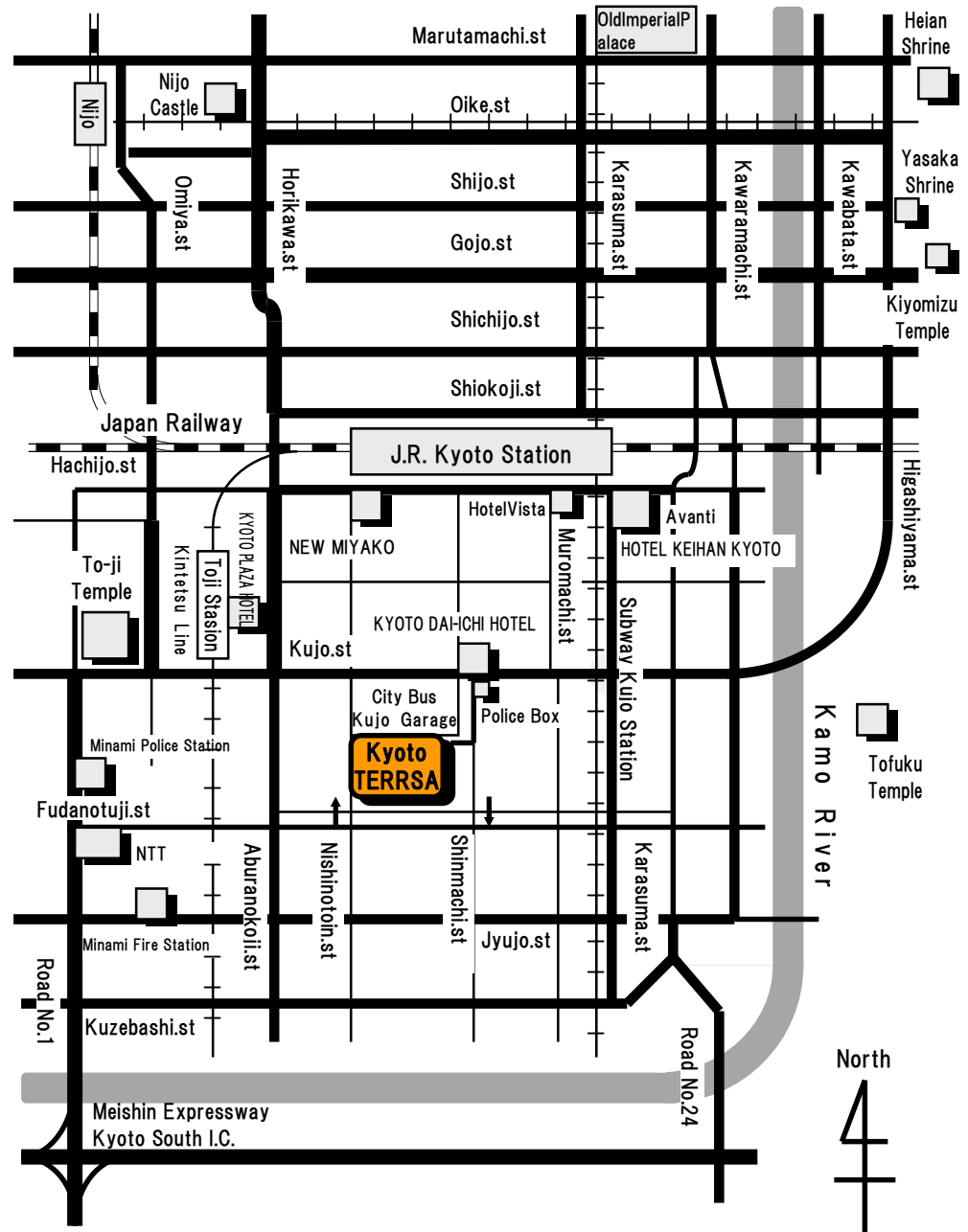
- 75minutes by train from Kansai international Airport to Kyoto Station
- 2hours and 30minutes by Shinkansen(bullet train) from JR Tokyo Station to Kyoto

## Transportation

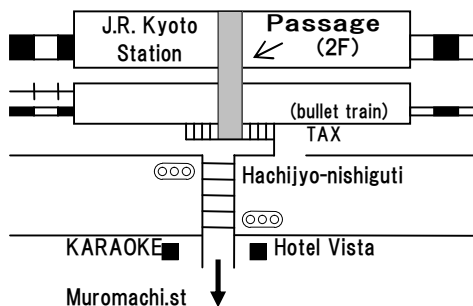
- 5minutes by subway (Karasuma Line) from Kyoto Station to Kujo Station.
- 5minutes walk from Kujo Subway Station.
- 5minutes walk from To-ji Station on the Kintetsu Line
- 15minutes walk from Kyoto Station



Kyoto TERRSA



## J.R. Kyoto Station Sketch



## Sightseeing close by

- Toji Temple (10minutes walk)
- Tofukuji Temple (10minutes by Bus)
- Kiyomizu-dera Temple (20minutes by Bus)
- Yasaka Shrine (25minutes by Bus)
- Nijo Castle (30minutes by Subway)
- Heian Shrine (30minutes by Bus)